

# THE ORION WARS – PART 6 – THE FLOOD – THE BATTLE OF TIAMAT



Conocimiento Pleyadiano

August 13, 2021

Video URL: [https://youtu.be/LiLUgRNEM\\_I](https://youtu.be/LiLUgRNEM_I)

Do you know why so many ancient monuments show water erosion? Why does the Moon show anomalies in its orbit? Do you want to know what happened in our solar system 12,500 years ago? Would you like to know the history of the Earth? This is the sixth video in a series of 8 videos where we will explain the hidden history of the Earth and the origin of the human species.



{6:12} And God looked upon the earth, and, behold, it was corrupt; for all flesh had corrupted his way upon the earth.

{6:13} And God said unto Noah, The end of all flesh is come before me; for the earth is filled with violence through them; and, behold, I will destroy them with the earth.

{6:14} Make thee an ark of gopher wood; rooms shalt thou make in the ark, and shalt pitch it within and without with pitch.

{7:4} For yet seven days, and I will cause it to rain upon the earth forty days and forty nights; and every living substance that I have made will I destroy from off the face of the earth.

{7:10} And it came to pass after seven days, that the waters of the flood were upon the earth.

Genesis, chapter 6 and 7 in the book of the Bible. The myth of the universal flood originating in the Sumerian civilization has been common to almost all beliefs in history, Egyptians, Jews, Muslims, Hindus, and Mayans. But is it just a myth? The reality is that a lot of historical, archaeological and geological evidence has been found that it is very likely that there was a great flood in ancient times. And although many have tried to divert attention to what could be a solely local flood, such as the Black Sea flood theory, the amount of evidence found in all corners of the planet is staggering.

The British researcher H. S. Bellamy alone collected 500 accounts from practically all human cultures that speak of a great flood. And proof of this would be the strong water erosion that many

ancient monuments present. One of the most famous is the Sphinx of the pyramids of Giza in Egypt, which clearly shows the effects of having been submerged under sea water at some point. The archaeologist Sheriff El Morsi, investigating in depth the erosion of the water in the entire Giza plateau, also discovered a sea urchin fossil, which would indicate that the entire area was at some point submerged. In addition, the scientist Dr. Robert M Schloch, assures that the structures of the plateau are much older than is thought, based on studies carried out on patterns of water erosion that are found both in the sphinx and in the surrounding rock. And he confirmed that it was thousands of years older than is normally believed.



But as if this were not enough, there are also geological and archaeological data, starting with the numerous marine sediments deposited in high mountains around the world. This type of sedimentation could only be caused by a large wave or similar phenomenon that carried away a large number of corpses and plant debris. Moreover, it is even said that the way in which fossil remains have been found could speak of a massive and sudden death, a great cataclysm in a short period of time. Could a great catastrophe in our history have inspired the myth of Noah and other similar myths?

GEOLOGÍA | Congreso en Alcalá de Henares

## Fósiles marinos en la cima del Everest



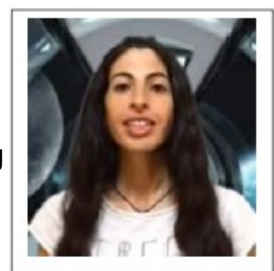
There are not only traces of a great cataclysm on our planet, but also in our solar system. Between the orbits of the planet Mars and the planet Jupiter is the asteroid belt. In 1766, Johann Daniel Titius discovered a supposed pattern in the distance of the planets from the sun. And following that exact same pattern, he discovered that a planet was missing between Mars and Jupiter, right where the asteroid belt is today.

In 1802, Henric Solvers suggested that they could be fragments of a planet much larger than in the past could have orbited in that region between Mars and Jupiter. And that everything pointed to the fact that the planet had decomposed due to an internal explosion or comet impacts. Although today official science attributes the presence of the asteroid belt to the remains of the very formation of our solar system, could it be that the asteroid belt was really the remains of an ancient planet? Without going any further, if there is something that draws the attention of many scientists around the world, it is the presence of the Moon itself. Many experts say that our satellite is composed of anomalies and mysteries that create an extraordinary puzzle. The first academic conundrum is that the moon does not have an apparently correct orbit based on its size, which has led many scientists to assure that its orbit could only be explained if it were a hollow object. The eminent scientist Carl Sagan said that a natural satellite cannot be hollow. So, that means that if the moon is really hollow, it cannot be a natural satellite and is therefore artificial.

According to experts, the Moon is too big and too far away and also does not rotate based on the Earth like any other natural satellite, but it always has the same face, keeping its other face always hidden from the Earth. In addition, various anomalies appear on its surface, such as craters that appear and disappear in a few hours. How can a smooth surface suddenly appear, where before there was a huge crater? And without naming the thousands and thousands of objects detected on the lunar surface and around its orbit. For example, the sighting of Dr. Frank Harris, who detected a black body on the lunar surface about 400 km long and 80 km wide. Or the renowned astronomer Patrick Mohr, who discovered more than 100 domed buildings on its surface.

Most surprising of all are the large number of stories and myths that speak of when the Earth did not have a moon. The first references we have of an Earth without a moon come from the ancient Greeks. Aristotle tells us about the Pelasgians, inhabitants of Arcadia, where he explains that they are a very old people, from when the Moon did not exist. They were called the Proselenes, which means 'before the Moon'. The African Zulu population also has a myth that explains that the moon was brought here by two alien brothers, called Owane and Pangu. But we also find archaeological records. In the astronomical temple of Kalasasaya, located in Tiahuanaco, Bolivia, shows us a calendar of a time when the moon did not exist and they tell us that the Moon went into orbit at a specific time thousands of years ago. There are many historical records that show us or tell us about when the moon was not yet in the sky. Could it be that the moon is not what it seems?

**Cristina.**- Hello friends, welcome to Pleiadian Knowledge. I'm Cristina, and today we bring you video 6 of the Orion Wars. As I always say, if you have not seen the previous videos, I encourage you to do so, you will find them in the playlist "The hidden history of the Earth", or in the description of this video itself. This video is a conversation we had with Yázhi Swarúu, a young alien, where she explained to us how this first ancient battle was developing or how it was escalating and how it ends. I leave you with the conversation and see you at the end of the video.



*"This information is provided by extraterrestrial persons, women and men from the Taygeta star in the Pleiades cluster, through a written contact with us."*

### **CONVERSATION WITH YAZHI SWARUU TASHERIT**

Cristina.- And during this first ancient battle that was happening here on Earth, how did this come to Tiamat and result in the outcome of the destruction of the planet?

Yázhi Swarúu Tasherit.- The planet was mostly made of water, it is known that the reptiles that came in pursuit of the Lyrians had placed a ghost station, a decoy, in Tiamat to divert attention. And it worked for them because the Federation attacked that base or signal that emulated being a big

bad base. This was to confuse the Federation into thinking they were there when they were actually on Mars and on Earth. The latter is the most widely accepted explanation. (The attack) caused the destabilization of the entire planet Tiamat. This is because being a planet almost entirely covered with water, the great explosions created shock waves that covered the entire planet. They bounced against themselves as they went around the planet creating a destabilizing effect of the mass that ended up disintegrating the planet itself. It's like a pendulum effect that gets more and more energy until you pull the metronome.

At that time Tiamat had countless aquatic beings, some Sirian-based, with advanced intelligence. But there are no records of their culture or their degree of advancement, since everything was destroyed. The word "disaster" comes from "des-astro", or the destruction of a star. Destruction of Tiamat, disaster. Then, before leaving, dissipating the energy, it caused the planet itself to tear apart, disintegrating into many pieces that today are the asteroid belt. They can even check that officially the composition of most of the asteroid belt is made up of ice or pieces of dirty ice with dirt and rocks stuck together.

Ignore the films where everything that is exposed to space freezes in seconds. It does not happen like that, that is not true. Space from the point of view of low densities such as 3D, 4D, 5D, 6D, space is a vacuum and in a vacuum there is no heat transfer, so the temperature of an object remains as such. From the point of view of high densities, space is not a vacuum, it is a fluid or liquid, high-frequency water in the form of potential energy that flows with the exact same laws that govern fluids. Fluid dynamics. Therefore, it is said to be water, but it can also be described as potential energy, with internal flows and currents, which is gravity.

So, as Tiamat was a fairly large sea planet, its water floated through space for some time. It's not clear to me how long, but not much. A few years, maybe decades, at the most. Until much of that water was trapped by Earth's gravity and Venus's too a little later. And it entered both planets like water falling from the sky in torrential quantities, creating the Universal Flood of which virtually all cultures with ancient records on Earth speak of, drowning and destroying almost the entire surface of the Earth and Venus, and every civilization that was there.



*Image similar to Earth before the flood*

This point has never been clarified before. The fact that water maintains its fluidity in space for a long time due to the low transmission of heat, since it has no way of freezing as such quickly, even less if it is in large volume. That is, if you pour a bucket of water through the window of your ship, it may remain liquid for a few months before it solidifies. On the other hand, if you only add a few drops, then it may remain liquid for a few days. A larger mass of water will conserve its liquidity for longer. NASA lies to them by going against the same laws of thermodynamics and fluid mechanics that they claim to observe.



So, as so much mass of water enters planet Earth, it completely changes the delicate geological and energetic dynamics of the planet itself because it is like a Dynamo or electromagnetic generator, creating a flow due to the high amount of ferrous magnetic material in the magma. Then, the rotation is affected, and with the rotation, the dynamics of formation of the magnetosphere because a planet needs a certain rotation or internal currents to generate its electromagnetism. That is, its spin and the internal movements of the magma in relation to other magma layers inside the Earth, are what create a dynamo effect that the magnetosphere generates. Interestingly, the same principle as a spacecraft counter-rotating magnetic turbine. With this change, in addition to the cataclysm caused by the flood, when the energy dynamics of the planet are affected, it causes a sliding or movement of the poles, thus creating an inversion of planetary polarities with its subsequent consequences, devastating for all life and biology, even for the shape of the terrain itself.



*Simulation of Earth's surface before the deluge*

Since it is said that with a pole reversal the gravity of a planet is also affected because it is related. Creating rocks the size of mountains flying through the skies, quoting Michael Tsairon here with the flying rocks. In my opinion, I think it is possible, but not probable in the case of Earth, since I do not see or have not found geological evidence. But I do see it possible, maybe not rocks or mountains that big, maybe just the size of buildings or a little more.

This ended up wiping out most of Earth's biology. However, the evidence is consistent and it appears that even in those cases there were many humans who survived. The exact number is not very clear because in some writings there are only eight females and a number of males impossible to determine. This is known because it can be seen in the mitochondrial DNA that only the mother passes on.

That all human biology comes from eight women. In the case of men it is more difficult to know, since their DNA is only found in the nucleus of each cell, but that of the mother is also there. So this is in some logs. However, I clarify that I have other data that say the same, eight women without knowing how many men.

But further back, some 40,000 to 50,000 years referring to the persecution of the Lyrians by the reptilian factions that persecuted them during the great expansion, or Orion Wars, which we still live in. So we have two sources with the same information, but putting it in different contexts on Earth.

Cristina.- And during the destruction of Tiamat, what happened in the rest of the planets of our solar system?

Yázhí Swarúu Tasherit.- I have no records, I only know that the Karistus were also very affected. It is that, in itself, with the destruction of Tiamat the entire solar system was affected. All planets, as expected.

Cristina.- But during this battle that started, did it also start on other planets, apart from Tiamat?

Yázhí Swarúu Tasherit.- Yes, although Tiamat got the worst of it. Mars, for example, which was its neighbour, had its surface devastated. All the civilizations present there, even a Karistus base, disappeared, and to date they have not returned. Battles took place between planets and on planets. War of the entire solar system, but not as in which the cultures of the planets of the solar system got involved, but as in which they were collateral damage between two strong adversary groups, giving everything against each other in the whole area.

Estel·la.- When did the Maitre arrive on Mars?

Yázhí Swarúu Tasherit.- More recently after the year 1300 AD. Saying Karistus on Mars is respecting the source of my information, but remembering that saying Karistus is basically like saying Lyrians. It is only that the Karistus appropriate the base or the creation or origin of the space human races.

Cristina.- And going back to the destruction of Tiamat, about the lure that the reptiles put out to the Federation, what waves did they emit? How did they fool the Federation?

Yázhí Swarúu Tasherit.- Some authors, such as Michel Tsairon, mention it as frequencies, like radio, that made it seem that they were there. In my opinion and with records from here and taking into account the available technology, it was more like a total holographic emulator that put a whole false civilization there, that is, a hologram of a city or base, with its emanation of Muon transmissions and consumption of Energy. Like a hologram immersive game. Blue Beam more after transmissions that determine the presence of a base there. Nowadays, the same could not be done thanks to advances in gravitational sensors of the interferometer type, which feed very precise data to the computers of a ship. It would just immediately detect that it is a fake broadcast or hologram, a decoy. But back then the technology wasn't that advanced.

Cristina.- I understand, thank you very much.

Estel·la.- Like the moon does here now, but projected on Tiamat?

Yázhí Swarúu Tasherit.- Aha. Yes, you project a city onto the surface. In addition, you transmit something that seems to be consuming energy in that city and you augment it with communications noise transmissions, as a large city or base would have. And you have your high-tech lure.

Cristina.- And on Earth, how did it experience the flood that caused the destruction of the water planet, Tiamat?

Yázhí Swarúu Tasherit.- Then, returning to the peoples of the Earth already formed as a mixture of the Adams and the Eves, suddenly they find a flood coming from those wars from the destruction of Tiamat. And most of them died there because of so much water entering and flooding everything, especially those who lived underground. Those who could, migrated to the highlands, such as the famous Scottish Highlands or to the plateaus of South and North America, Japan, Australia and New Zealand, but with a great resulting psychological trauma of which many authors know, of this that I share with you today, like Michael Tsarion, or Jordan Maxwell among others speak, although in truth they are very few. Psychological trauma that is still reflected in the human psyche today. Deep memory, genetics and souls who were there and suffered in unimaginable ways. The almost total destruction, annihilation or extinction of the human race. Few survivors with severe post traumatic stress remain. Many allege that it is passed on in the DNA to the entire human race, creating the fragmentation of the I, with it, giving birth to the ego, to the heavy human

duality, to the lack of empathy. I quote here Carl Gustav Jung on hidden human history, Berlin. 1925 in German, book on board this ship.

When the Earth was flooded, the inhabitants of the civilization of Atlantis fled the waters towards the highlands. Highlands of Scotland and Ireland as in the series: Highlander: The Immortal. Hence the name of highlands, which if you look at them are not very high, not today, but back then they were to the point of remaining like islands. And it is only at this time that modern civilization began to emanate or emerge from this point.

Ireland is the place of the beginning of modern civilization, not China or Africa. From there they migrated to other points such as Scandinavia and Egypt. That is why the ancient Egyptian Kings, not pharaohs, had elongated skulls and red hair like the Irish, because they were.



Look at this latest map made by me, which contains the migration of Atlantis and Lemuria.



The blue circles represent the most important settlements of the civilization of Atlantis and their movements, both migratory and those caused by the flood. The blue arrow to the white Circle with something in the center over what is now Giza is a move after this map. Blue circles without arrows denote settlements in Atlantis, with no movement or migration routes left on record. But I must emphasize that the Atlantean civilization had air capability, let alone interstellar. As for Lemuria during or because of the flood, the main movements that are recorded were towards Japan, towards North America, specifically Mount Shasta and towards Easter Island, the Chilean coast. Peruvian coast and southern Mexico towards Oaxaca.



Cristina.- If the highlands were Ireland and Scotland, were the lowlands the rest?

Yázhí Swarú Tasherit.- Yes, and in general in the records of various cultures they referred to highlands and lowlands. The high ones being on plateaus the size of continents, today the edges of the oceans. I found this map online.



It's about what would happen if the poles melted from global warming, but it serves me here to illustrate the post-Tiamat flood. This would be what the Earth would look like right after the great flood.



In this close-up you can see how Scotland and part of Ireland remained above the water level, where the survivors of the populations of Atlantis arrived as described in the historical works of Michael Tsairon, which backs up what I say today. Note, here they put the continents on the water, from what I understood about the site with those images it is because it is a future prediction and there they reflect their theories based on the movements of the Earth's plates.

Other planets like Erra, for example, are geologically very stable, this in part because without so much water tectonic plates do not slide as easily or quickly as with water. Because by its very pressure it seeps through the cracks below the plates and facilitates their movement. This high pressure water also has a lot to do with the formation of oil fields, but that is another story. For



reference, Erra is today largely as Earth was back then before the flood, with no large oceans, just countless seas and lakes of all sizes, and is geologically more stable than Temmer which is a water planet, but consequently it has more geological activity.

Cristina.- And with all this flooding, what happened to the Federation base in Giza?

Yázhí Swarúu Tasherit.- The bases were lost during the flood and resurfaced there again, what today is called predynastic Egyptian civilization and later the dynastic or classical Egypt. And the evidence is in the sphinx that clearly shows erosion from being submerged in water, unlike the pyramids, which are post-flood.

Estel-la.- Is that why many cities around the world were abandoned, such as, for example, Machu Pichu and Tiahuanaco, Atlantean cities?

Yázhí Swarúu Tasherit.- Although I do not have a direct explanation why, it is easy to see that they left overnight, considering that they have stellar roots and interstellar capacity. Which is difficult for modern Earth scientists to accept. They left because of the very collapse of the Atlantean civilization, as a result of Tiamat's wars against the Federation.

Cristina: And how did the destruction of Tiamat affect Mars?

Yázhí Swarúu Tasherit.- The explosion of Tiamat devastated the surface of Mars to this day. Mars is today a desert with patches of green areas with little surface water. And all full of remains of bases and planetary civilizations scattered all over the planet. Filled with junk, dilapidated buildings and the remains of ships and structures everywhere. Today the bases there are almost exclusively underground DUMB-type facilities.

For example, Europa, the (Jupiter's) moon, is a highly prohibited area by the Federation. No one should disturb the life forming there. The destruction of Tiamat caused the devastation of the surface of Mars, the flooding of the Earth for having drawn the waters of Tiamat with its gravity, the flooding of Venus, also for the same reason. And the rearrangement of the position of the planets in the solar system with its subsequent catastrophic consequences for all, including polarity shifts and mass extinction of all living things.

Cristina.- And in the internal continents, what happened? Hadn't the civilization of Atlantis arrived there? Did the Agarthans already inhabit there?



Yázhí Swarúu Tasherit.- Yes, I have already seen the settlement of intraterrestrial races. But the birth of the Agarthean race specifically occurred when the Lemurians fled the flood to the inner Earth. The best known example of this is the intraterrestrial population of the Mount Shasta region, clearly descendants of Lemuria.

As for details of other races, they are known to be there, but not much detail remains. They go down not to be seen, not to be understood and to hide from races that can be seen as invasive whether they carry regressive or positive flags. Away from the eyes of scouting ships from other worlds like Taygeta. And from precisely this the concept of the eye of Horus was born.



The Eye of Horus is a low-orbiting ship, look and watch from the sky. The spiral line is its trajectory and indicates that it arrived by portal. The downwards tear is a scepter to hold with the hand, it indicates who has that ability. The eyebrow is like a wave, it indicates that it comes from the waters above, space. That's the eye in the sky and the concept is predynastic Egyptian, Federation. Since then, the extraterrestrials of the races that are look from the sky, they observe, like a scientist observes an anthill. But the Illuminati, the cabal kidnapped it as a symbol of power over the human population, the symbol does not belong to them.

Cristina.- And with all this, when were the Arks of the Alliance created here before or after the battle of Tiamat? I think you had commented that there were three, the Ark of Gabriel, the Ark of Michael or ISIS and the Ark of the Covenant.

Yázhí Swarúu Tasherit.- Right after, they are Taygetean, they are multipurpose: communications, planetary DNA guard with examples of each species, small portals and weapons of mass destruction, among other things. Yes, there are three coffers. One, non-functional, is in a vault below the Pentagon, the other functional is in the Russian Vladivostok Base, in the heavily guarded South Pole. The third is in the Taygetean ship Toлека, under the custody of Alenym of Temmer.

Estel·la.- Why did Taygeta come to Earth at that time? What purpose did they serve? Just help the Lyrians, that is, Lemuria?

Yázhí Swarúu Tasherit.- I don't have a fixed purpose, but Taygeta has always been an explorer race that gets everywhere. Also that of liberating peoples, deeply embedded in the Taygetean psyche. I don't know of a specific reason why Taygeta came to Earth at that time. But it does seem to have a great influence in the formation of the rebellion that ended up freeing Adamic slaves and causing a war on a planetary scale. And, with that detonating the arrival of the Federation here. And, the conflict that ended with the destruction of Tiamat, the Great Flood, the arrival of the artificial Moon and 3D, Van Allen belts and all that.

Estel·la.- And last question, what role did the Moon ship play in the battle of Tiamat? Why was it so destroyed?

Yázhi Swarú Tasherit: It was one of the sphere ships of the Federation and the Andromedans, the main bases from where the Federation ships operated as the Viera does today, which is also Andromedan, only that being smaller it is arrow-tipped type and not spherical. During the battle for Tiamat it was logically a primary strategic target, receiving multiple hits from different classes of weapons including ionizing nukes, which made it too difficult to repair and clean. The cost of lives during that was very great as well. As the Moon is large, it is habitable in areas, but always remembering that it is a 100 percent artificial structure. Like onion layers inside, that is, covered, spherical inside another and another until reaching the core where the main reactors are. There are other small ones closer to the surface, but they have not been used for a long time.

\* \* \*

Cristina.- Hello again. I hope that everything that Yázhi explained to us has been as interesting as it is to us and that it helps you to gradually fit together the pieces of the puzzle of our history. For us it is exciting to be able to learn, or rather, to be able to remember all this information. To end the video, I would like to add that after the Tiamat disaster, the reptilians and allies were greatly weakened, but so was the Federation. It was then under desperation that the Federation itself placed the Moon activating the 3D Matrix, which functions as an etheric mesh or jail in order to contain the problem.

The Earth was originally of the fifth density and what the reactors of the Moon caused is to compress matter to the third density. That is to say, what the Moon does is control the frequency of toroidal immersion at which the Earth is, and by controlling the frequency of the toroid, it controls the frequencies or cycles per second of all the matter that is inside the toroid, in this case to the Earth, and everything that it contains within.

Swarú of Erra explained that it is like keeping a cork submerged in water. The earth would be the cork, which struggles to float, but the force of our fingers keeps it submerged, just as the Moon and its limiters keep the Earth submerged, not letting it reach the surface of the water, or 5D. This etheric limit is what we know as the Van Allen belts. This would be the force field that, in addition to Earth, is the only planet that contains the Van Allen belts. And what we see as the Moon or lunar surface is just a hologram projected from the same ship, so it was the Moon set by the Federation about 12,500 years ago that keeps the Earth in an artificial 3D, but as Yázhi always says : "There are no densities as such, the universe is just a frequency gradient."

If you want to know more about the moon, we invite you to watch this live where Anéeka of Temmer and Yázhi explain a little more about this ship, what its surface is like and the influence it has on Earth. For now I am saying goodbye. Thank you very much for being here and listening and see you in the next video.

#### **LINKS:**

YOUTUBE: [https://youtu.be/LiLUgRNEM\\_I](https://youtu.be/LiLUgRNEM_I)

LBRY: <https://lbry.tv/@PleiadianKnowledge:2>

FACEBOOK: <https://www.facebook.com/Pleiadian-Knowledge-108034420679455>

TELEGRAM: <https://t.me/CONOCIMIENTOPLYADIANOTELEGRAM>

IN ENGLISH: <https://www.youtube.com/channel/UCe4VqunF6sfWExnU8SS9Gg>

THE TRANSCRIPTS CAN BE FOUND AT: [www.swaruu.org](http://www.swaruu.org)

Facebook: Pleiadian Knowledge PDF: <https://www.facebook.com/groups/2783294118568494>

Transcribed by Andrew Mdos of Sociedad Taygeta

<https://www.facebook.com/groups/1212334248933444>

<https://www.sociedadtaygeta.com/>

English translation by SpaceMonkey of Taygetean Disclosure - English Transcripts

<https://www.facebook.com/groups/325586172179485>